

- Chrome coated, grey or white PC frame
- Electrostatic powder painted, cataphoresis coating aluminum injection body
- Polycarbonate luminaire glass
- Stainless connector
- Underwater cable joint
- H07RNF rubber cable
- IP68 air valve

## P W Product & Power Options

Product Name	Light Color	Input Voltage (V)	Power (W)	Luminous Flux (lm)	Weight (kg)
CG306	WW-NW-CW	220-240V AC	8	880	1,3
CG309	WW-NW-CW	220-240V AC	10	1.320	1,3
CG309	WW-NW-CW	12-24V DC	10	460	1,3
CG309	RGB	12V DC	13	-	1,3

Power and Lumen values provided are based off of a lensless product with cold white (CW) LED. It may vary according to the desired colour.

## C Light Color Options

● WW: Warm White 3000K	● R: Red 625nm
● NW: Natural White 4000K	● G: Green 525nm
● CW: Cold White 6500K	● B: Blue 465nm
● RGB	● A: Amber 590nm

## O Lens Options



XN: Extra Narrow Angle

N: Narrow Angle

W: Wide angle

XW: Without lens

## K Cable Direction Options



09: Single bottom entry

10: Entry and exit on the cover \*

\* Only for DC options

## U Upper Piece Options



15: Chrome coated spot frame

16: Plastic spot frame in white

17: Plastic spot frame in grey



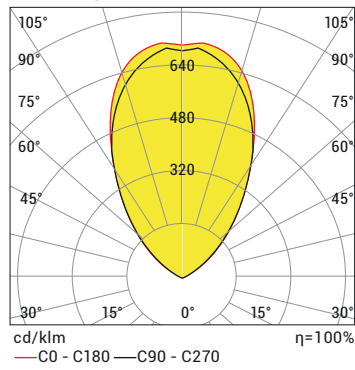
Order Code

P . W . C . O . K . U . M

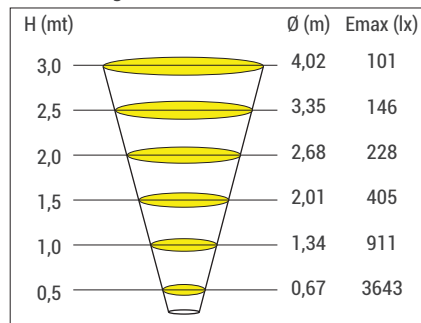


## Product Diagrams

Polar Diagram

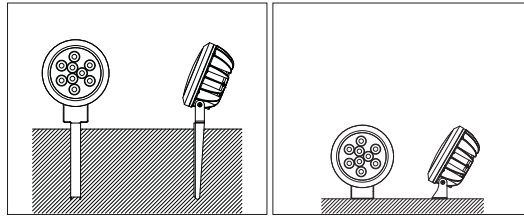


Conical Diagram



CG3 9LED CW 60D 12W 220V AC IP67

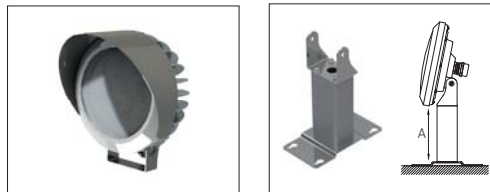
## M Mounting Options



13: Stake Mount

14: Screw Mount

## Additional Piece Option



Reflector

34: 5cm  
35: 10cm  
36: 20cm  
Stand extension pieces

## Control System Options

Color Type	PWM	INV PWM	DMX	DALI *	0-10V DC*	TRIAC
WW-NW-CW	•	•		•	•	
R,G,B,A	•	•		•	•	
RGB	•	•				
RGBA/W						
RGB DMX			•			
WHITE DMX			•			

\*DALI and 0-10V applicable only in DC input

Product Code	Voltage (V DC)	Control Systems	Cable Core Quantity		
			Mono	RGB	RGB W/A
CG309	12	PWM	2x	4x	-
	12-24	ON/OFF	2x	-	-

